

ASSEMBLING A DASH KIT

Assembling a dash kit and mounting your new receiver is a simple DIY project. Your radio will fit in the dash kits sold by Volunteer Audio if it conforms to DIN standards. DIN is the industry designation for aftermarket radio sizes.

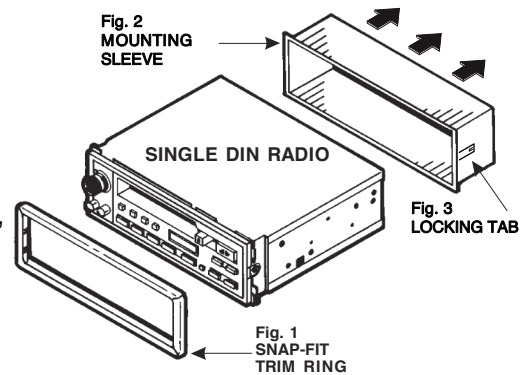
| | Width | Height | Depth |
|-------------------|---------------------------|---------------------------|-------|
| Single DIN | 7 $\frac{1}{8}$ " (178mm) | 2 $\frac{1}{8}$ " (50mm) | NA |
| Double DIN | 7 $\frac{1}{8}$ " (178mm) | 4 $\frac{1}{4}$ " (100mm) | NA |

A dash kit may also conform to an ISO standard. Dash kits that follow the ISO standard have the radio mounted from the rear instead of through the front opening.

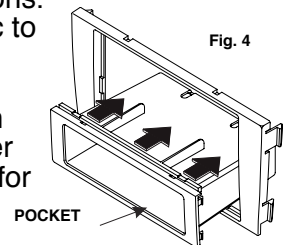
For an ISO mount the radio chassis is *not supposed to fit through the dash kit opening.*

DO NOT CUT A LARGER OPENING IN THE DASH KIT!

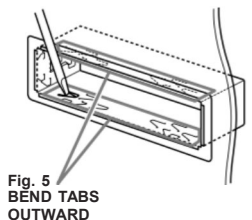
- 1
Remove the trim ring from around the face of the radio, Fig. 1. It is attached by a simple snap-fit. Set it aside as it may be used after the radio is mounted.
- 2
Remove the radio's mounting sleeve, Fig. 2. Use the supplied release tools, or a small screw driver, to disengage the lock tabs, Fig. 3. Then, simply slide the sleeve off the radio chassis. *Note that for Double DIN radios the mounting sleeve is generally not used with aftermarket dash kits. It is used primarily to mount the radio in a custom built dash.*
- 3
Prepare the dash kit. Many dash kits are designed for use in multiple applications. You may have to break off mounting tabs or attach components that are specific to your vehicle. *Read your instructions carefully before breaking off mounting tabs.*



The most common multi-use kit type is for adapting a Single DIN radio to a dash opening that is Double DIN (or DIN-and-a-half) sized. The void left by the smaller dimensioned radio is filled by an accessory pocket. If your dash kit is designed for Single or Double DIN sizes the pocket will be snapped or screwed in place for Single DIN use as in Fig. 4.



- 4
Attach the mounting sleeve to the dash kit's mounting panel. Slide the sleeve in from the front. Mounting sleeves have several tabs that are used to lock the sleeve in place. Choose the tabs that best line up with your kit. Using a flat screw driver bend the tabs outward to lock the sleeve in position, Fig. 5.
- 5
Insert the radio through the sleeve. Snap the front trim piece back in place.
- 6
Plug in the wiring harness to the radio and the factory harness. Install the dash kit with radio into the vehicle and reattach trim pieces as needed.



Double DIN and ISO kits use brackets that are snapped, or screwed, to the front mounting panel. The radio is then installed from the rear and held in place using screws in the bracket slots. The slots allow for adjustment in aligning the dash kit with the radio screw holes.

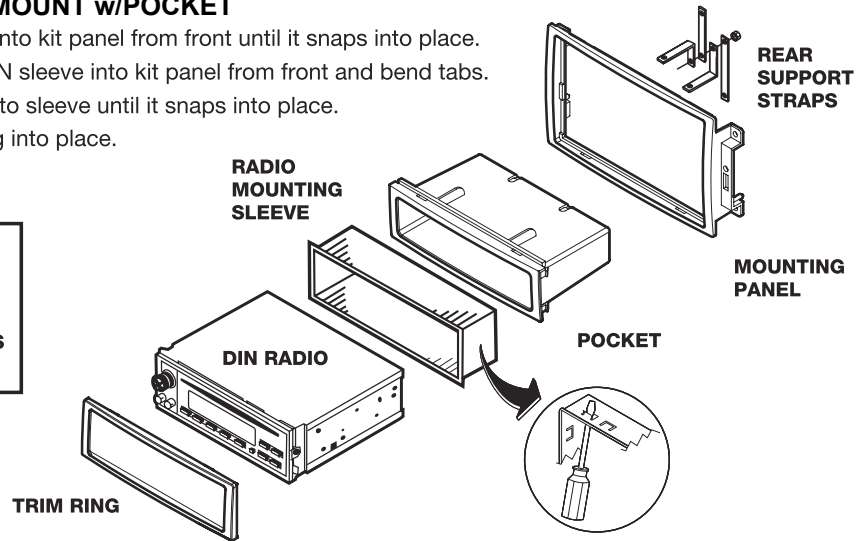
MOUNTING THE RADIO

THREE ASSEMBLY ILLUSTRATIONS FOR A MULTI-USE DASH KIT

SINGLE DIN MOUNT w/POCKET

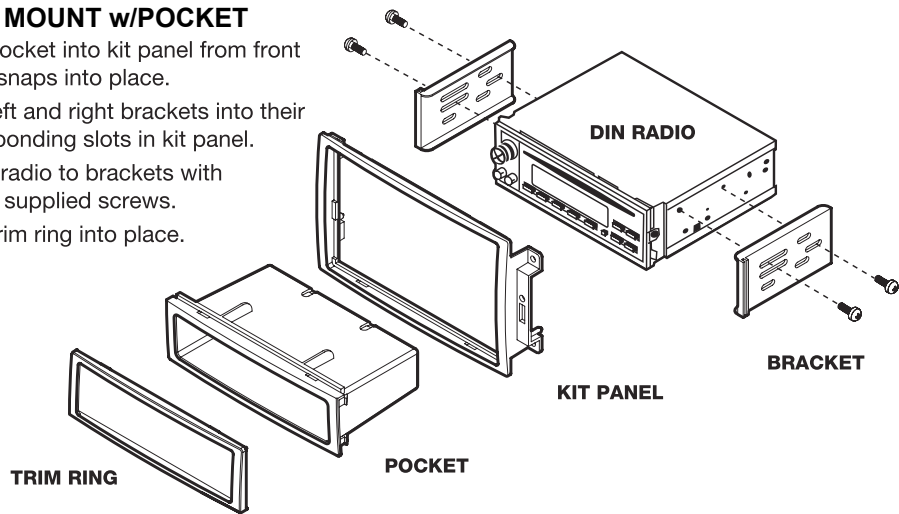
1. Slide pocket into kit panel from front until it snaps into place.
2. Next, slide DIN sleeve into kit panel from front and bend tabs.
3. Insert radio into sleeve until it snaps into place.
4. Snap trim ring into place.

NOTE:
 REAR SUPPORT AVAILABLE SEPARATELY. REAR SUPPORTING THE RADIO ADDS TO THE INSTALLATION'S STRUCTURAL INTEGRITY.



ISO DIN MOUNT w/POCKET

1. Slide pocket into kit panel from front until it snaps into place.
2. Slide left and right brackets into their corresponding slots in kit panel.
3. Mount radio to brackets with radio's supplied screws.
4. Snap trim ring into place.



DOUBLE DIN MOUNT

1. Slide left and right double DIN brackets into their corresponding slots in kit panel.
2. Mount radio to brackets with factory radio's supplied screws.
3. Snap trim ring into place.

